

# OnTime 2009 Eclipse Quick Start Guide

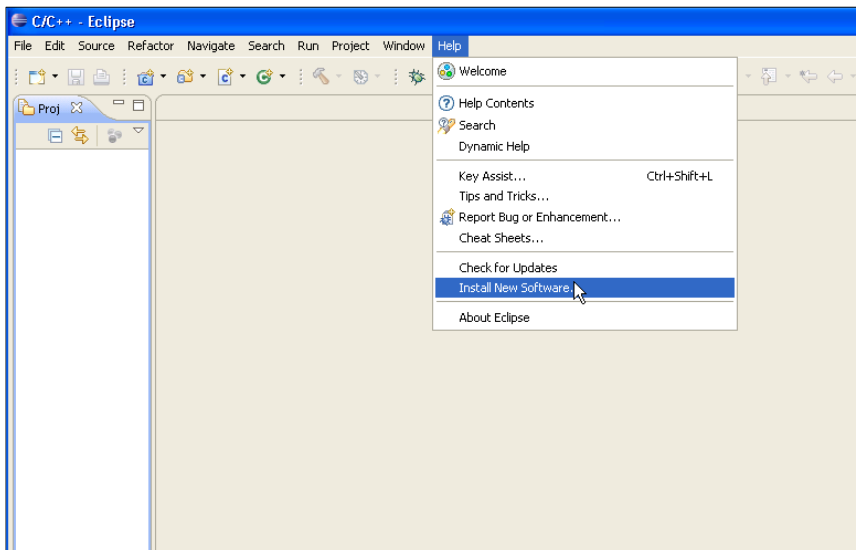
## Prerequisites

The OnTime 2009 Eclipse plug-in requires at least Eclipse v3.5 Galileo. Java version 1.6 is also required.

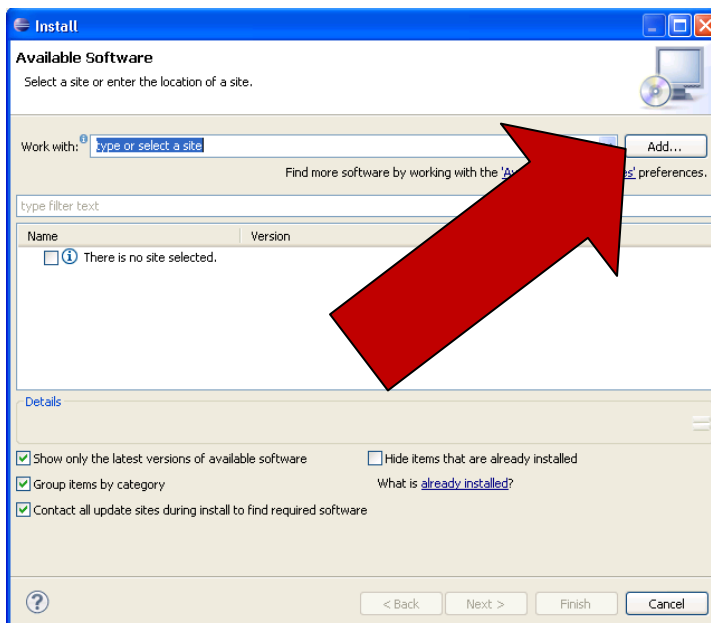
## Installation

Getting the OnTime 2009 Eclipse plug-in installed is quick and easy. Follow these steps to install:

1. Start by opening Eclipse and go to Help -> Install New Software.

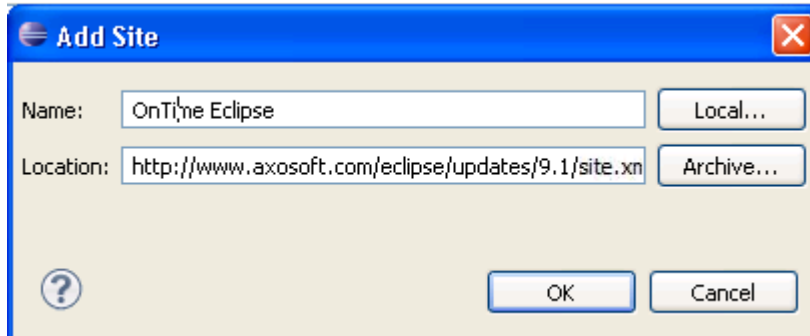


2. Click on "Add" in the top right-hand corner, to add a new Web Site location.



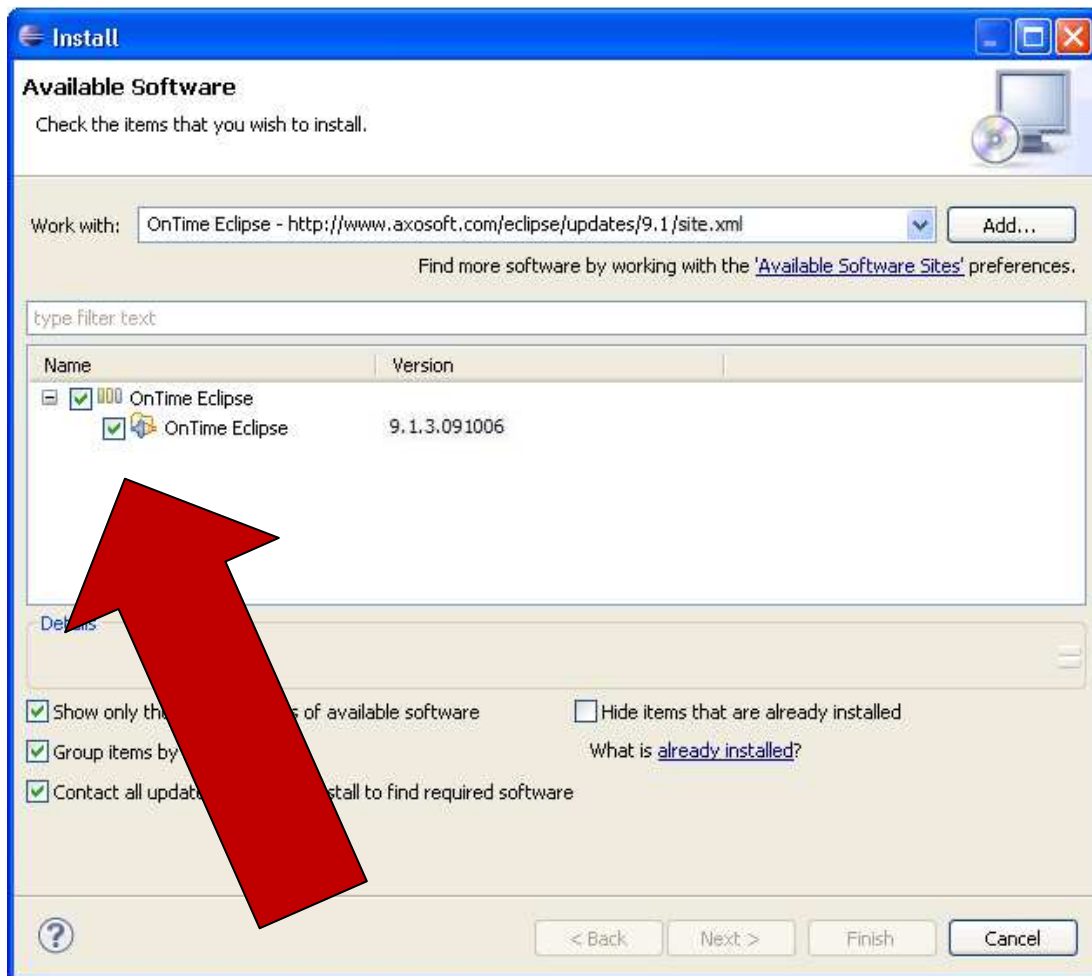
3. In the Name textbox insert "OnTime Eclipse"; in the Location textbox insert "<http://www.axosoft.com/eclipse/updates/9.1/site.xml>"

4.

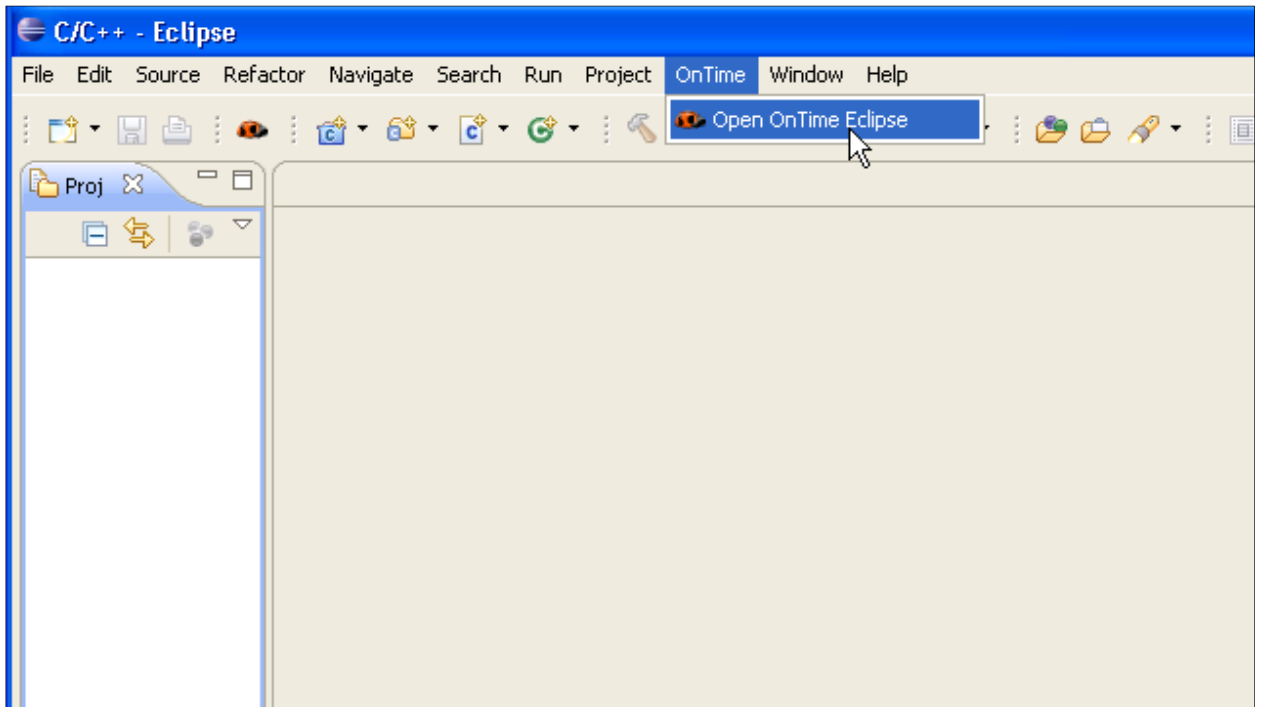


5. Click OK.

6. Make sure the "OnTime Eclipse" option is selected and click "Next".

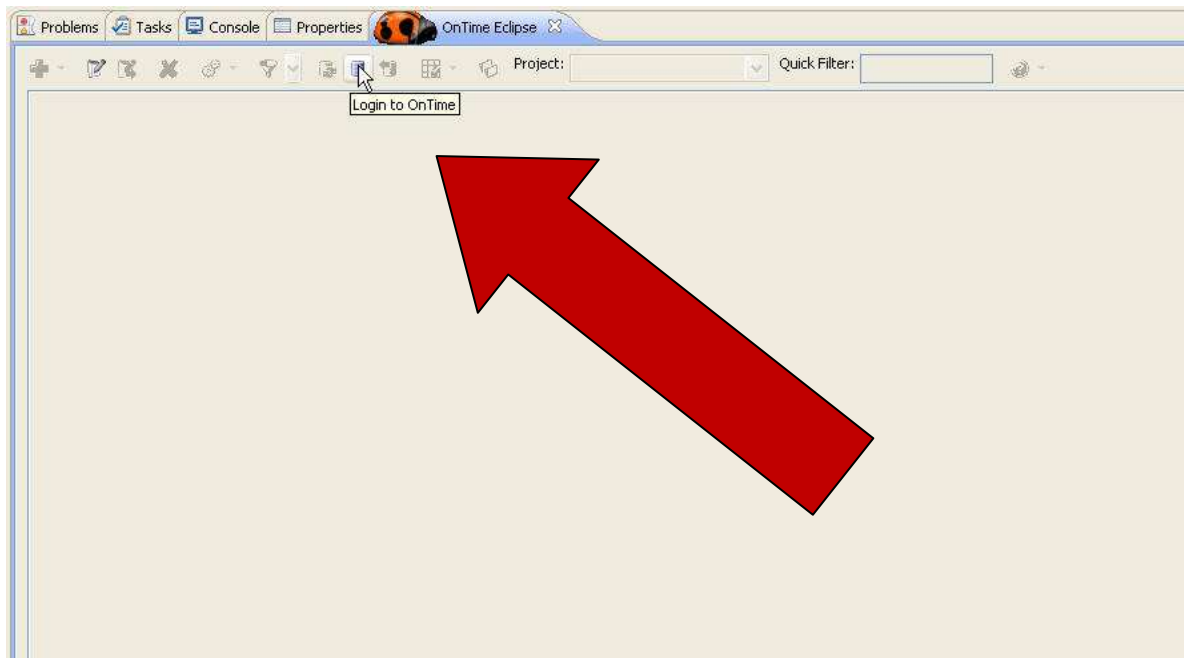


7. Click “Finish” to start the installation.
8. Eclipse may require a restart, and then the OnTime Eclipse plug-in will be available.
9. To run the OnTime plug-in from Eclipse, click on the “OnTime Eclipse” option at the top of the screen and select “Open OnTime”. The OnTime Eclipse view will now available for use.



## Connecting to a Database

To connect the OnTime Eclipse plug-in to an OnTime database, select the “Login to OnTime” button.



From this menu:



**Profile:** Add a profile name to store the following settings for later use

**Site URL:** The location of your OnTime Web installation. By default, this requires an SSL connection (this is not possible if the OnTime Web is on the same machine.) *You can turn off the SSL requirement by editing the Web.config of your OnTime Web installation and set the “RequireIPhoneSSL” parameter to “false”, if desired.*

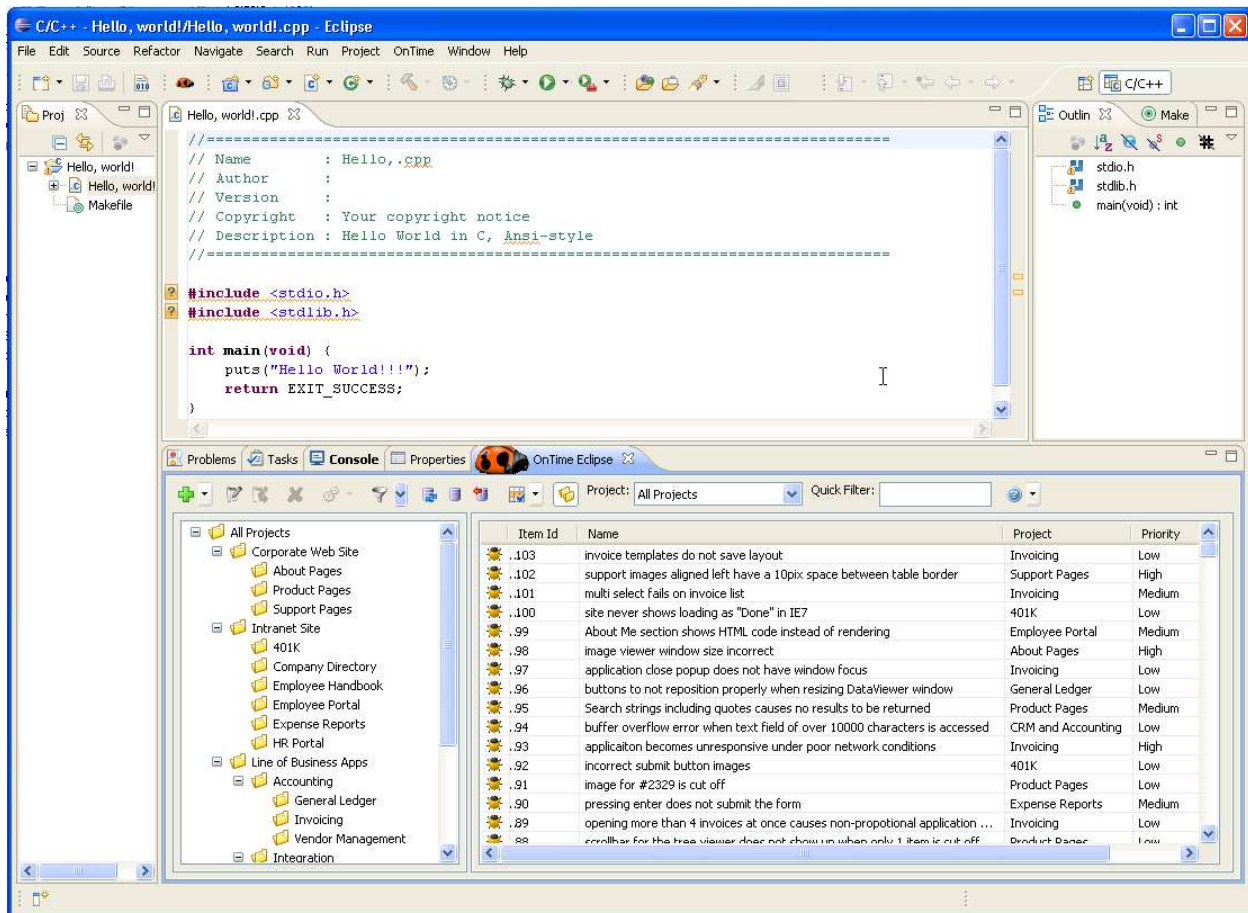
**Username/Password:** The username and password you wish to log into OnTime with.

**Remember Password:** Check this box to save the OnTime password

Click “Save” if you want to save this profile and reuse it later. Click “Connect” to connect to the OnTime database. You are now ready to use the OnTime Eclipse plug-in.

## Usage

The OnTime Eclipse plug-in works with Defects, Features, Tasks, and Incidents. Items can be selected in the grid and interactions can be performed on items similar to the grids in OnTime Windows and Web. A double-click will edit the item. A right-click brings up an Add/Edit/Delete menu. Buttons on the toolbar can interact with the selected item as well.



The buttons on the OnTime Eclipse toolbar from left to right are as follows:

- Add an item
- Edit an item
- Edit an item through workflow
- Delete an item
- Use filters
- Refresh the grid data
- Connect to a database
- Log out

- Edit grid columns
- Toggle project pane
- Filter by project
- Quick Filter (searches text fields and ID field)

When performing an add or edit, a screen like the example below is available (all of your field templates and custom fields will be applied):

The screenshot shows a software window titled "Edit Defect #4". The window is divided into two main sections: "Defect Information" and "Details".

**Defect Information:**

- Name: peth's last name of Raymond is misspelled on the about pages
- Workflow Step: Fixed
- Project: About Pages
- Customer Contact: Jonathan Winter (ABC Company)
- Release: (empty)
- Status: Closed
- Priority: Low
- Severity: Low Impact
- Original Estimate: 4 Hours
- Actual Duration: 3 Hours
- Percent Complete: 100
- Remaining Estimate: 1.1 Hours
- Publicly Viewable:
- Date Found: 11/10/2008
- Date Fixed: 11/11/2008
- Due Date: choose date >
- Build Number: (empty)
- Build Number Of Fix: (empty)
- Assigned To: David Rolf (Dev)
- Reported By: Marcus Funchess (QA)
- Operating System: (empty)
- Environment: (empty)

**Details:**

The "Details" section contains a rich text editor with a toolbar. The text in the editor reads:

**Edited by Nathan Cole (SE) on Sunday, September 02, 2007 at 12:28 PM**  
 jon reported that Seth Raymond's last name is spelled "Radmond" on the "whats new" section in the about pages  
 (<http://abccompany.com/about/whatsnew.aspx>)

At the bottom of the window, there are four buttons: "Cancel", "Save & New", "Save", and "Save & Close".

Large text fields, comment fields, attachments, work logs, and viewing emails is available with the OnTime Eclipse plugin.